

glass canopy
(optional on request)

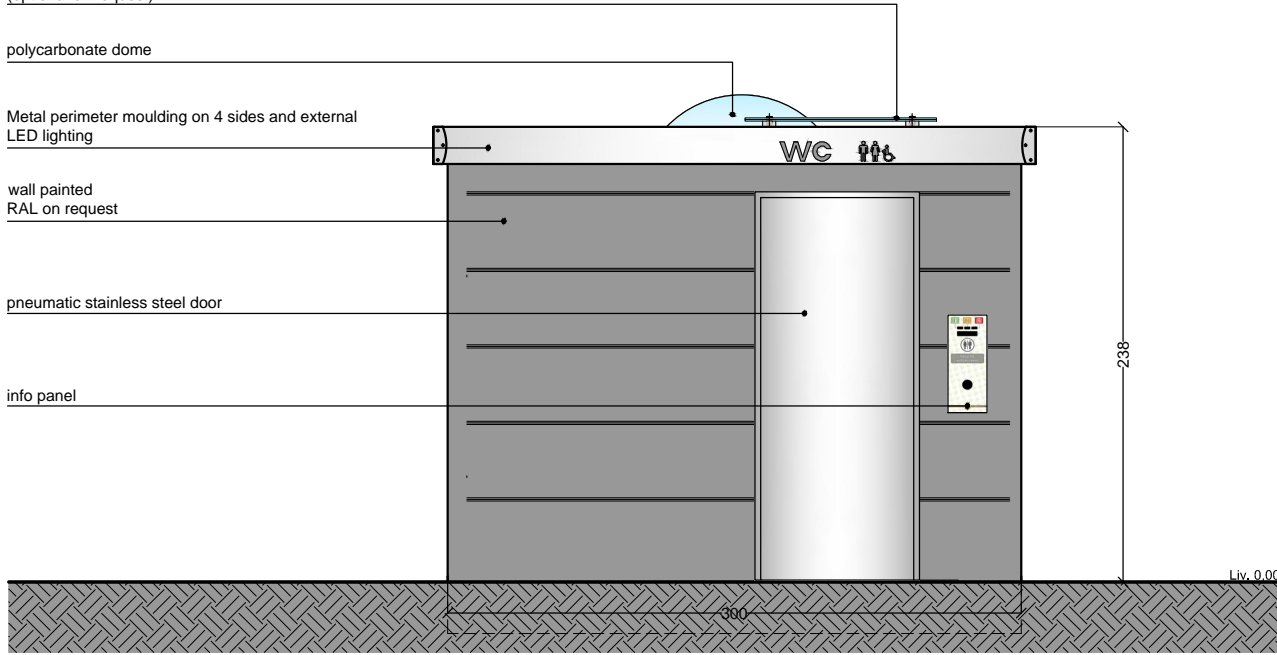
polycarbonate dome

Metal perimeter moulding on 4 sides and external LED lighting

wall painted
RAL on request

pneumatic stainless steel door

info panel

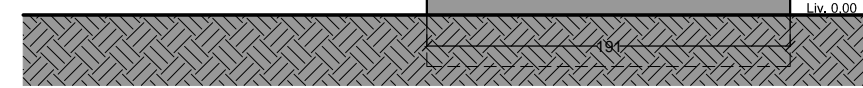


polycarbonate dome

metal perimeter moulding on 4 sides and external LED lighting

wall painted
RAL on request

technical door



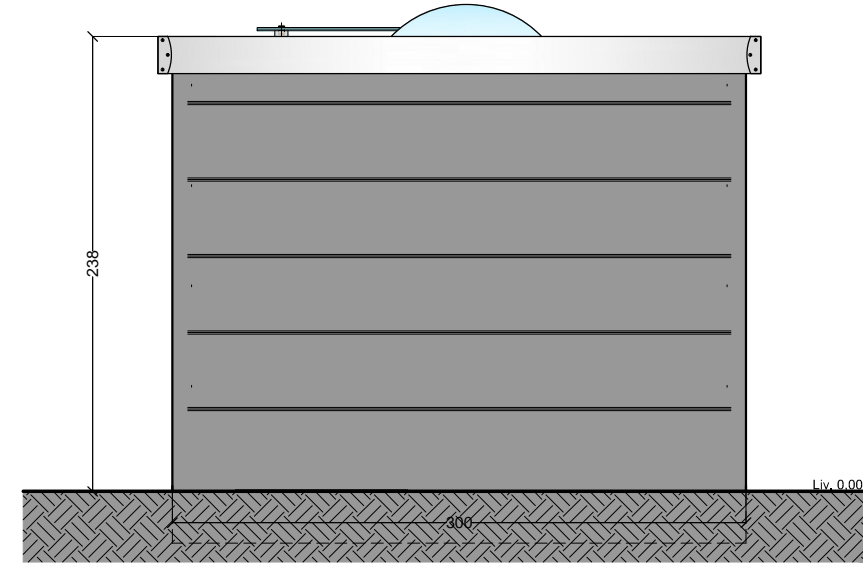
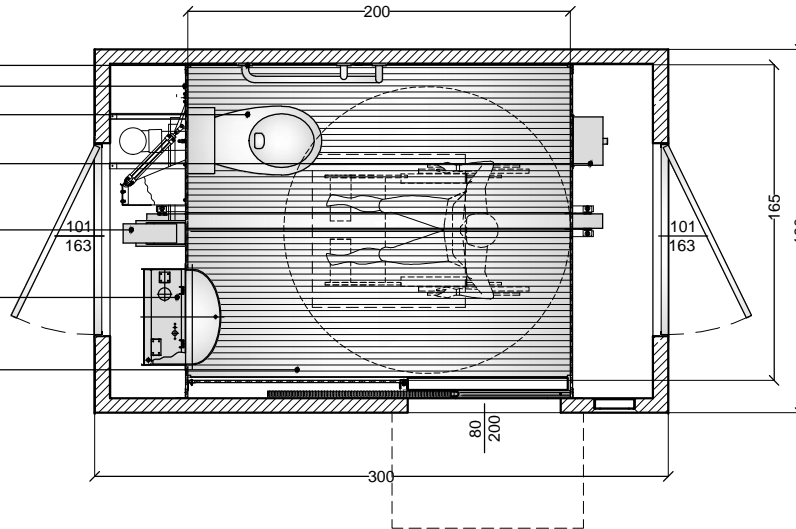
disable handrail
HPL panels
wall-hung ceramic wc-bowl

in-built stainless steel waste basin

in-built stainless steel toilet dispenser

stainless steel washbasin with automatic dispenser

aluminium floor non-slip



Rev. 1 | Data 08/04/2015 | Nota:



PTMatic S.r.l.
Via Ghetto, 1
20010 Beregno (MI)
www.ptmatic.it

CODIFICA DISEGNO:
99320.R1-Arch.-TWaw.2014
OGGETTO:
TWAW-PLAN AND VIEWS-MODEL "Amsterdam"

Materiale:
Note:

Travola

Scala
1:10

Dis. da

Appr. da

polycarbonate dome

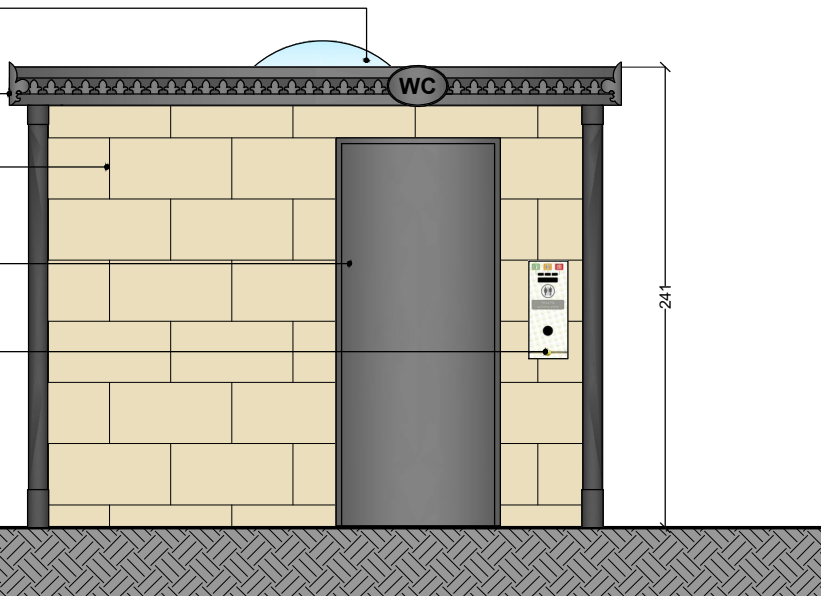
roof Metal perimeter moulding, type "historic" cornice, gray mica

walls with 30x60 cm grès tiles

pneumatic stainless steel door

info panel

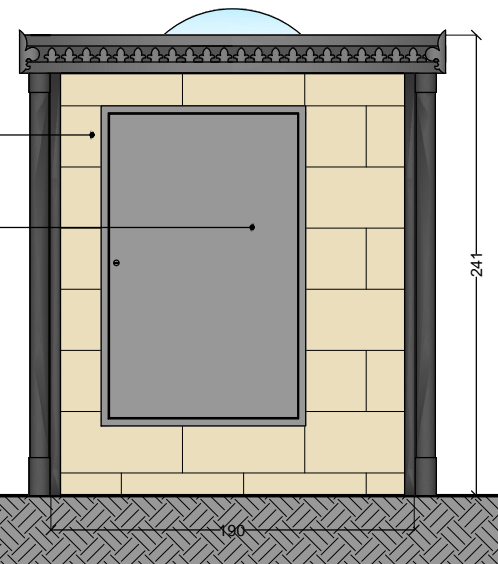
Liv. 0.00



walls with 30x60 cm grès tiles

technical door

Liv. 0.00



disable handrail
HPL panels

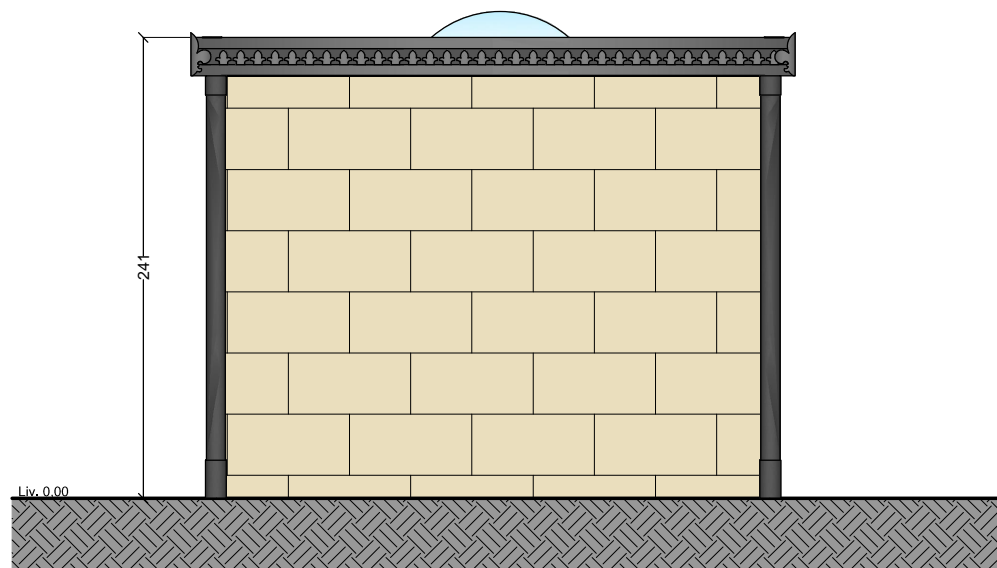
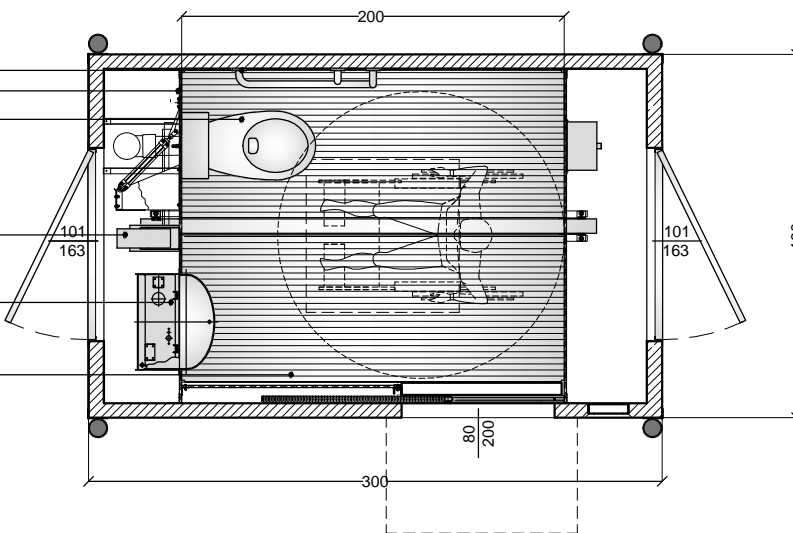
wall-hung ceramic wc-bowl


in-built stainless steel waste basin

in-built stainless steel toilet dispenser

stainless steel washbasin with automatic dispenser

aluminium floor non-slip



 PTMatic S.r.l. Via Giotto, 1 20019 Sesto San Giovanni (MI) www.ptmatic.it	Rev. 1 Data 08/04/2015 Nota: CODIFICA DISEGNO: 99320.R1-Arch.-TWaw.2014 OGGETTO: TWAW-PLAN AND VIEWS-MODEL "Milano"	tavola Scala 1:10
	Materiale: Note:	Dis. da Appr. da

polycarbonate dome

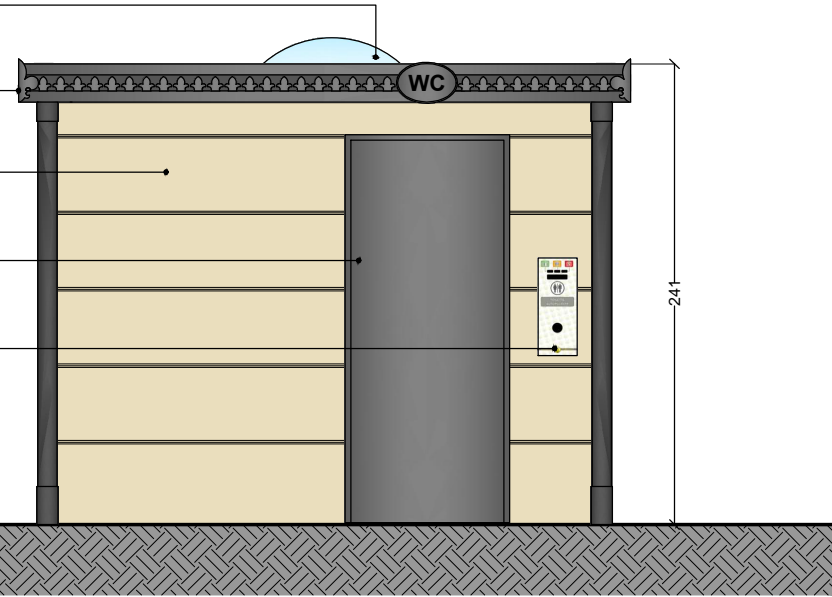
roof Metal perimeter moulding, type "historic"
cornice, gray mica

wall painted
RAL on request

pneumatic stainless steel door

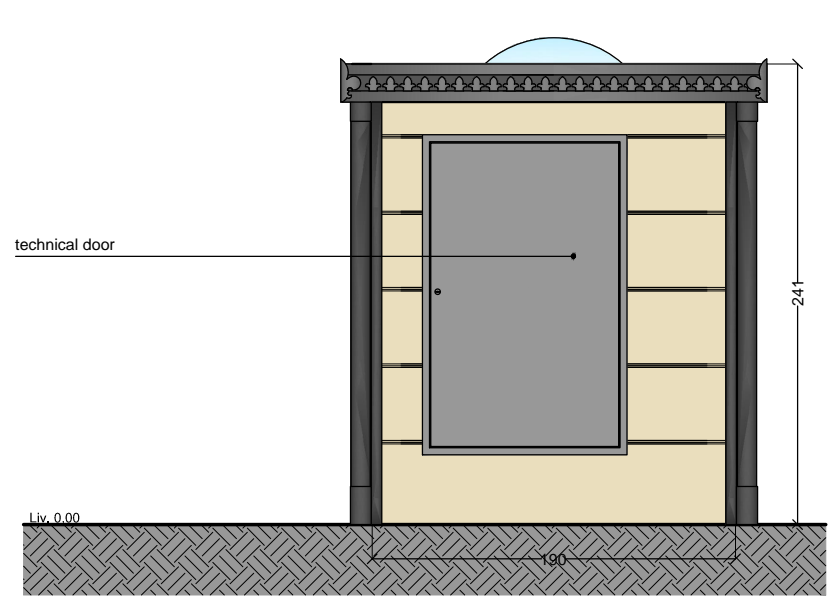
info panel

Liv. 0.00

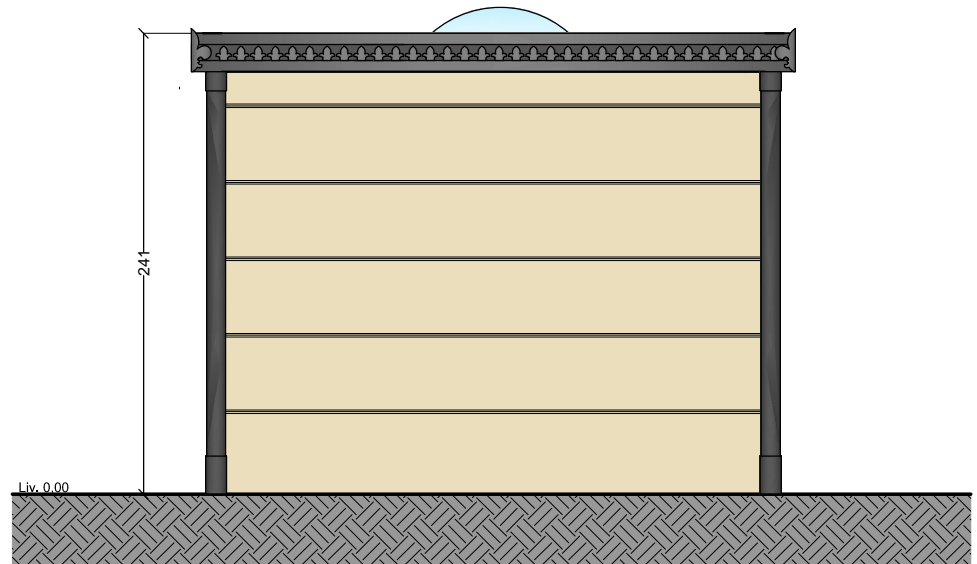
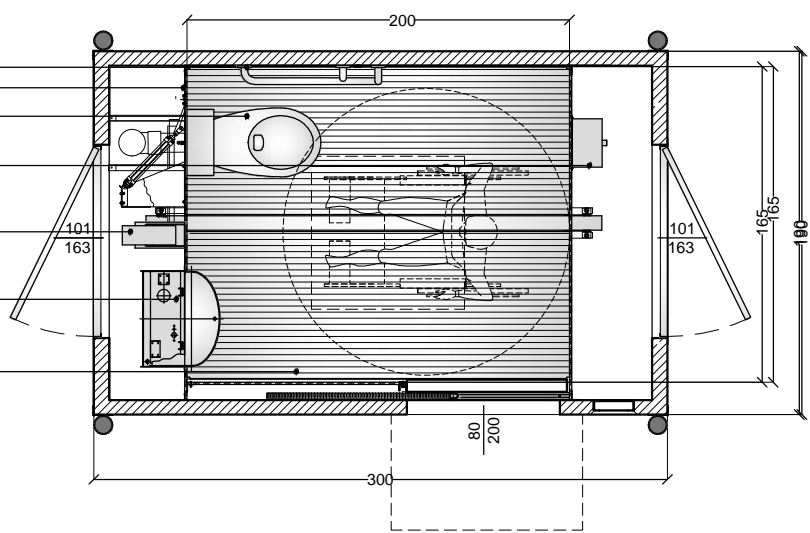



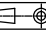
technical door

Liv. 0.00



disable handrail
HPL panels
wall-hung ceramic wc-bowl
in-built stainless steel waste basin
in-built stainless steel toilet dispenser
stainless steel washbasin with automatic dispenser
aluminium floor non-slip



 PTMatic S.r.l. Via Ghetto, 1 20010 Seregno (MI) www.ptmatic.it	Rev. 1 Data 08/04/2015 Nota: CODIFICA DISEGNO: 99320.R1-Arch.-TWaw.2014 OGGETTO: TWAW-PLAN AND VIEWS-MODEL "Venezia" with painted walls Materiale: Note:	Tavola Scala 1:20  Dis. da Appr. da
--	---	---

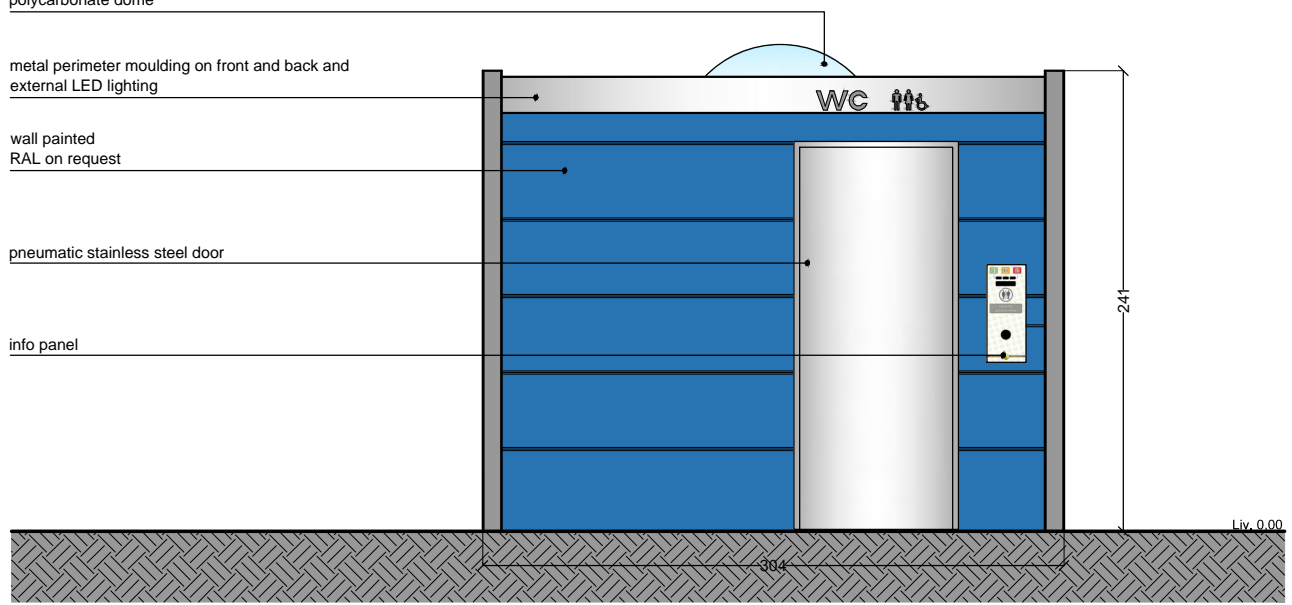
polycarbonate dome

metal perimeter moulding on front and back and external LED lighting

wall painted RAL on request

pneumatic stainless steel door

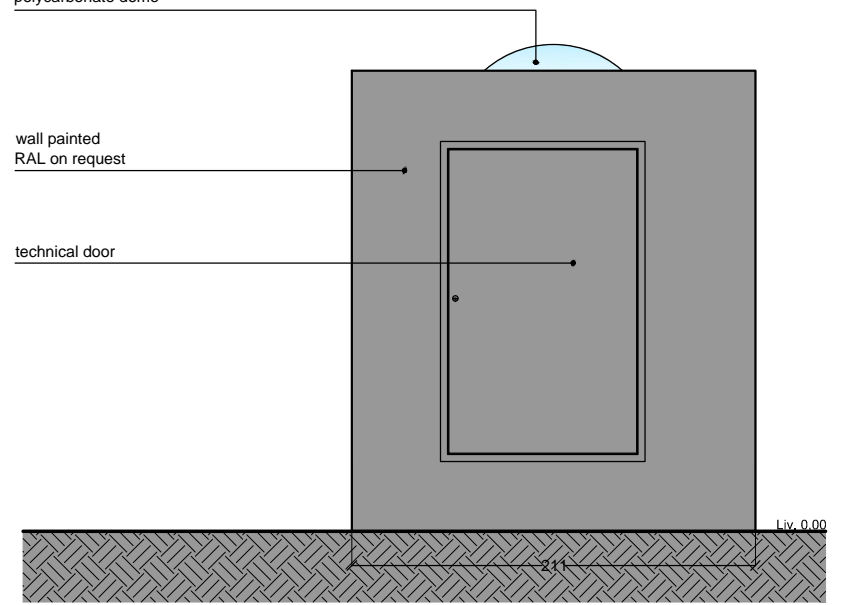
info panel



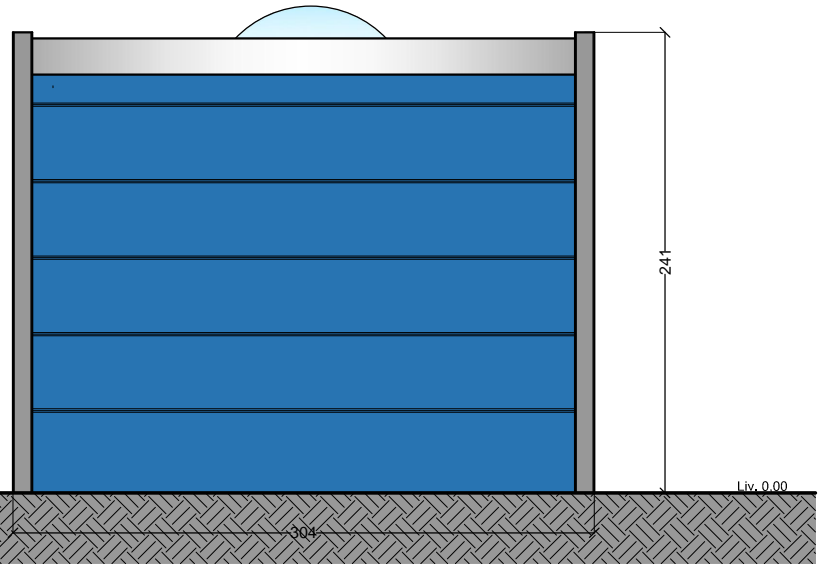
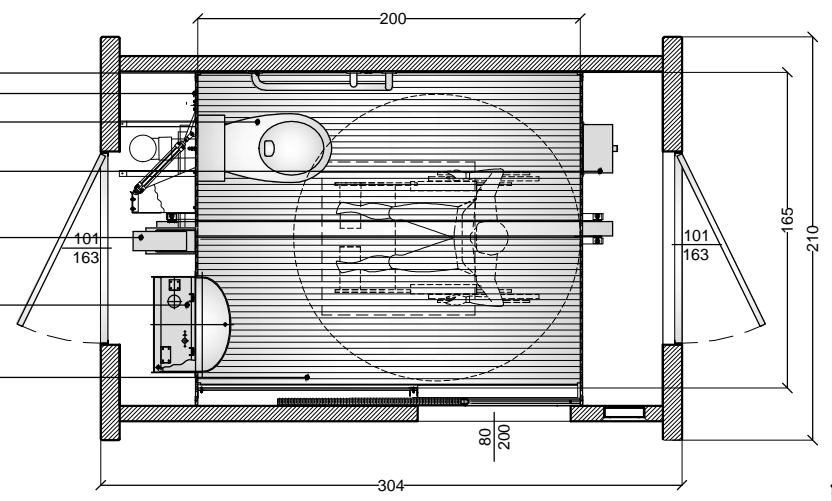
polycarbonate dome



wall painted RAL on request

technical door



disable handrail
 HPL panels
 wall-hung ceramic wc-bowl
 in-built stainless steel waste basin
 in-built stainless steel toilet dispenser
 stainless steel washbasin with automatic dispenser
 aluminium floor non-slip



 PTMatic S.r.l. Via Ghetto, 1 20019 Bergamo (MI) www.ptmatic.it	Rev. 1 Data 08/04/2015 Nota:	CODIFICA DISEGNO: 99320.R1-Arch.-TWaw.2014	Tavola
	OGGETTO: TWAW-PLAN AND VIEWS-MODEL "Milano"	Materiale:	Scala 1:10
	Note:	Dis. da	
		Appr. da	