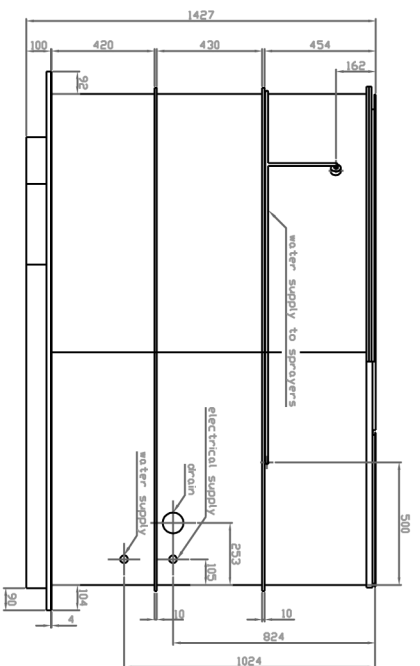
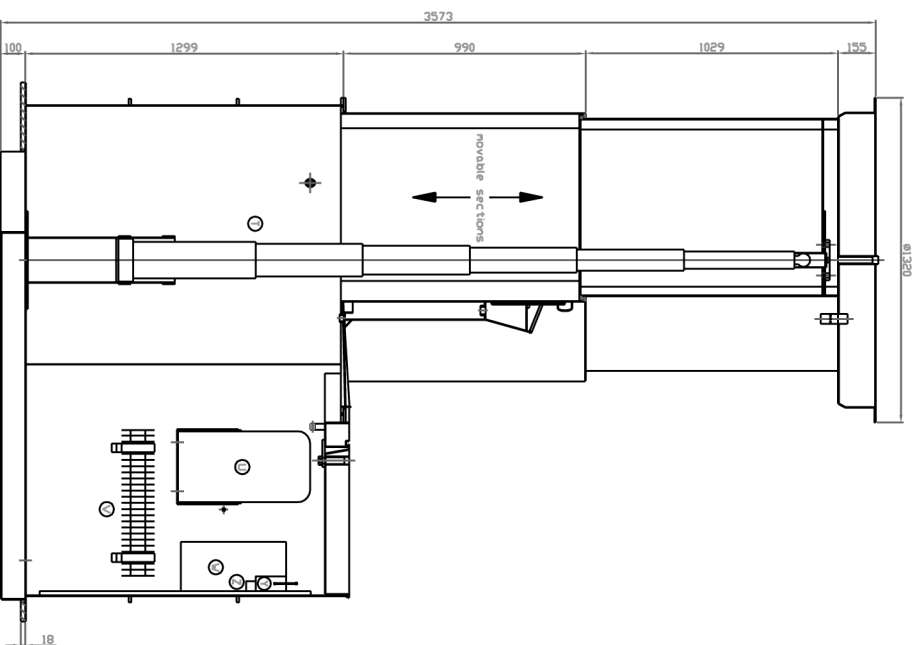
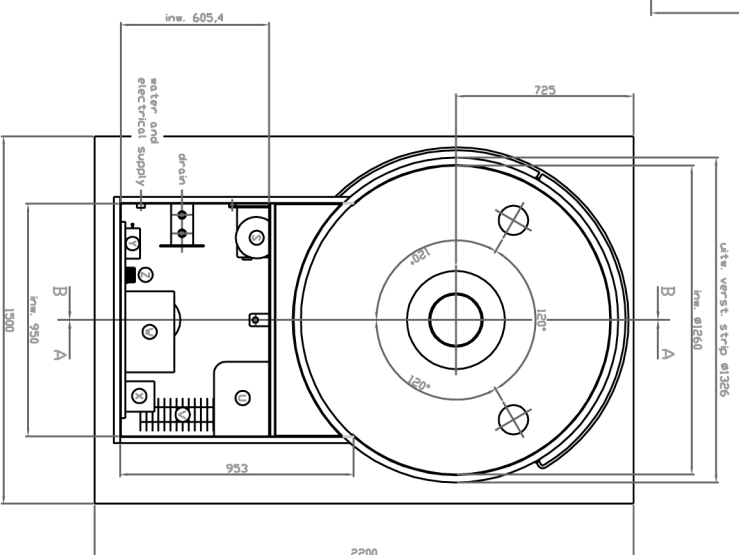


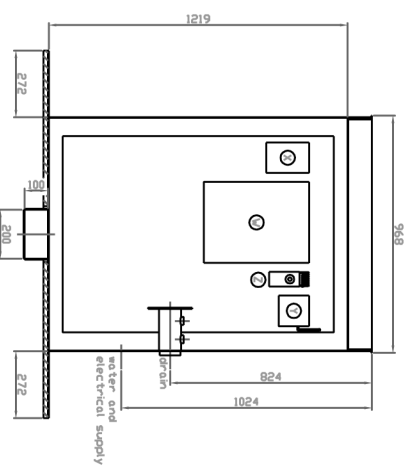
LASMECON B.V. SINT-OEDENRODE	date: 11-06-2001
	drawn by: R. Hulsen
SCHEMATIC DIAGRAM OF MISCELLANEOUS COMPONENTS	
Commissioned by URLIFT B.V.	



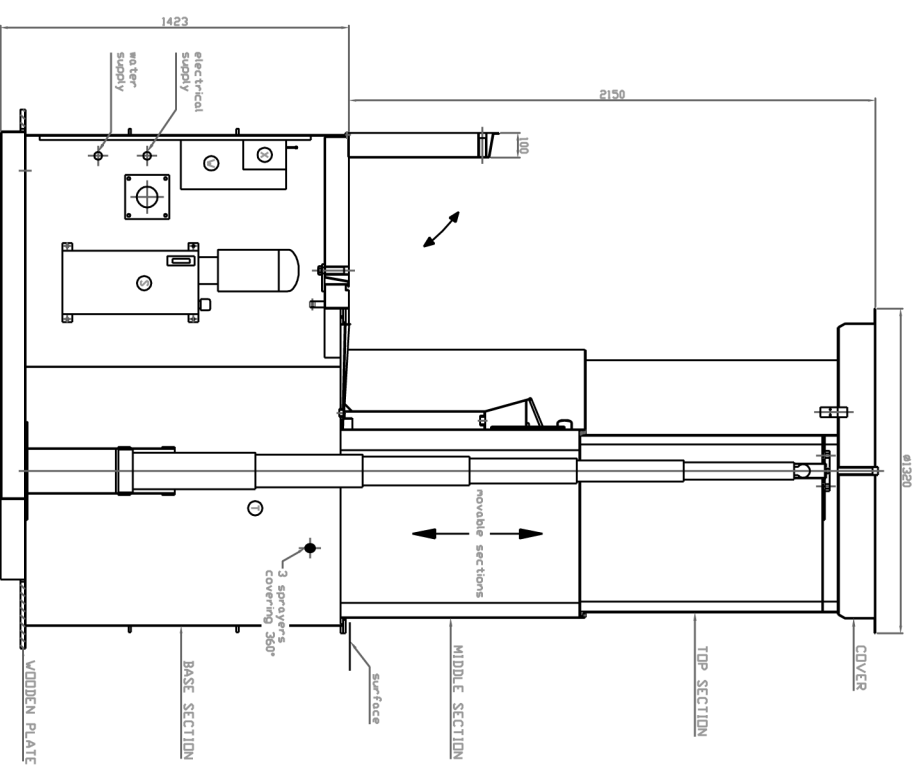
Side view of URILIFT in retracted state



Cross section B-B of URILIFT in extended state



View of rear wall of
technical area



Cross section A-A of URILIFT in extended state

- S = hydraulic unit with motor
T = 5-stage telescopic hydraulic cylinder
U = Air dryer
V = Electric heater
W = Control cabinet
X = Main fuse box
Y = Remote control unit
Z = Thermostat for heater

Pos. U and V are removable